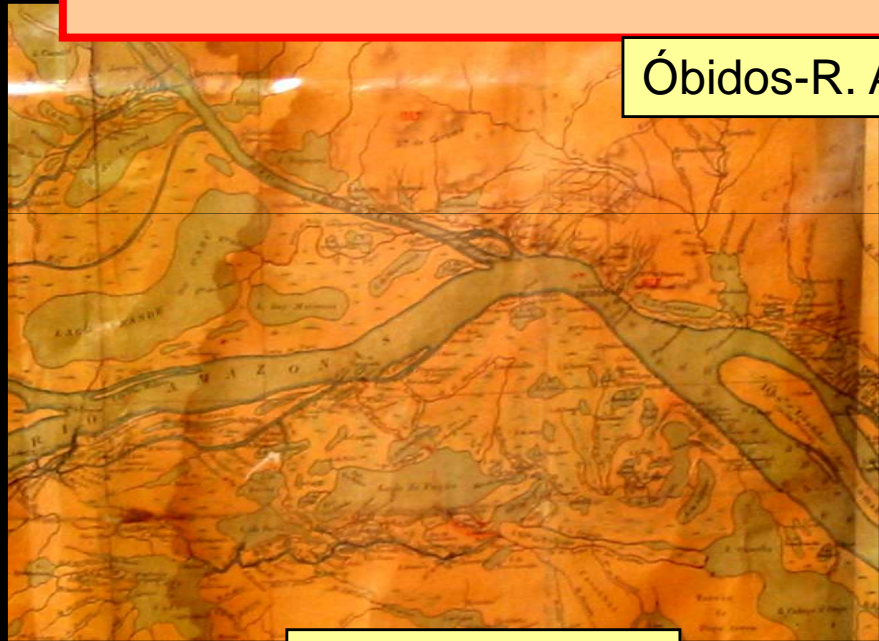




Estações ORE/HYBAM-BR

Óbidos-R. Amazonas



Le Cointe, 1911

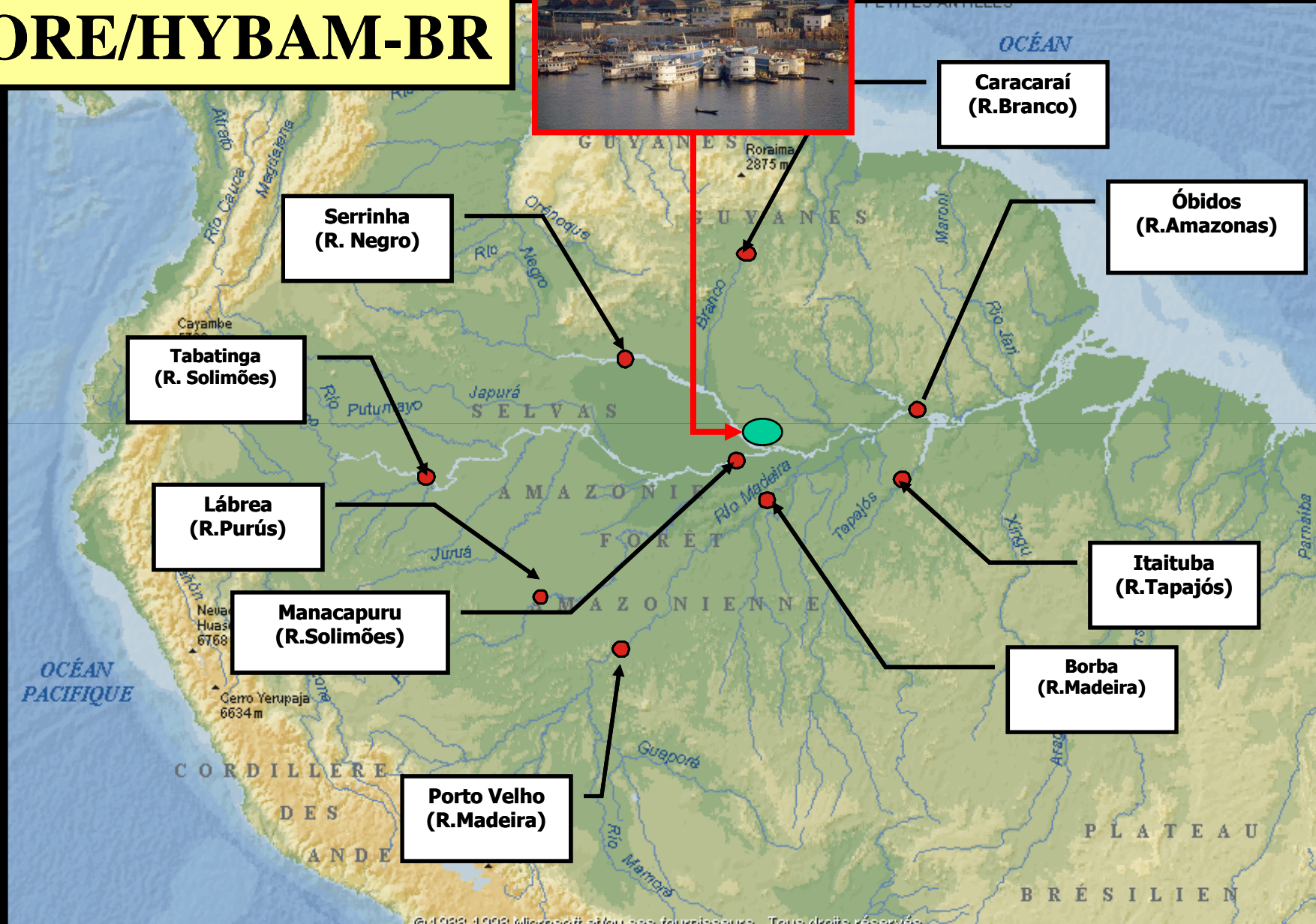


Landsat-TM, 2003

Naziano Filizola (UFAM) & Francis Sondag (IRD)

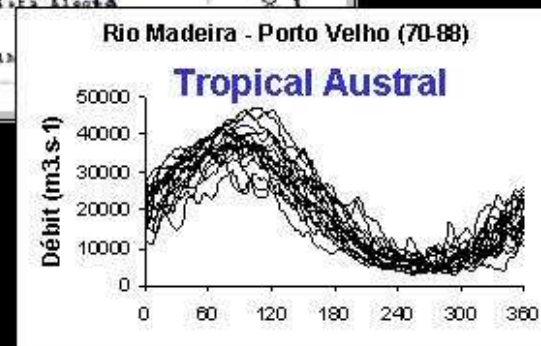
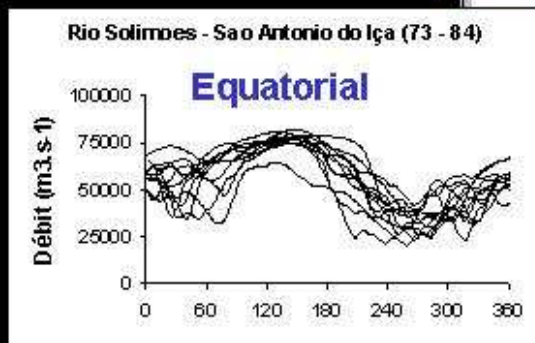
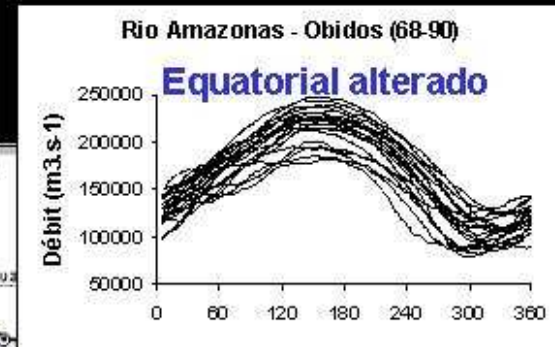
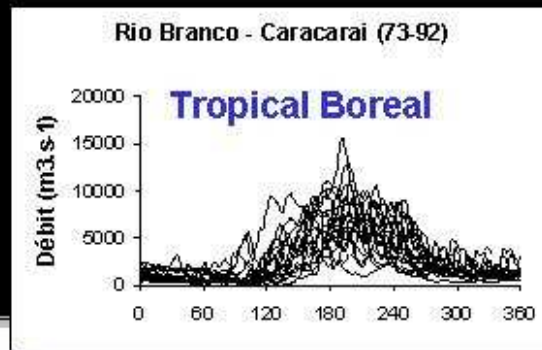
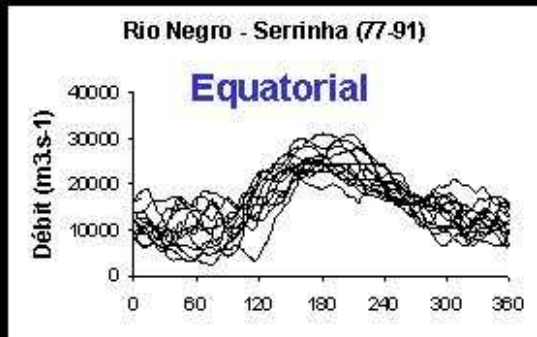
Estações ORE/HYBAM-BR

Base HYBAM - Manaus



Estações ORE/HYBAM-BR

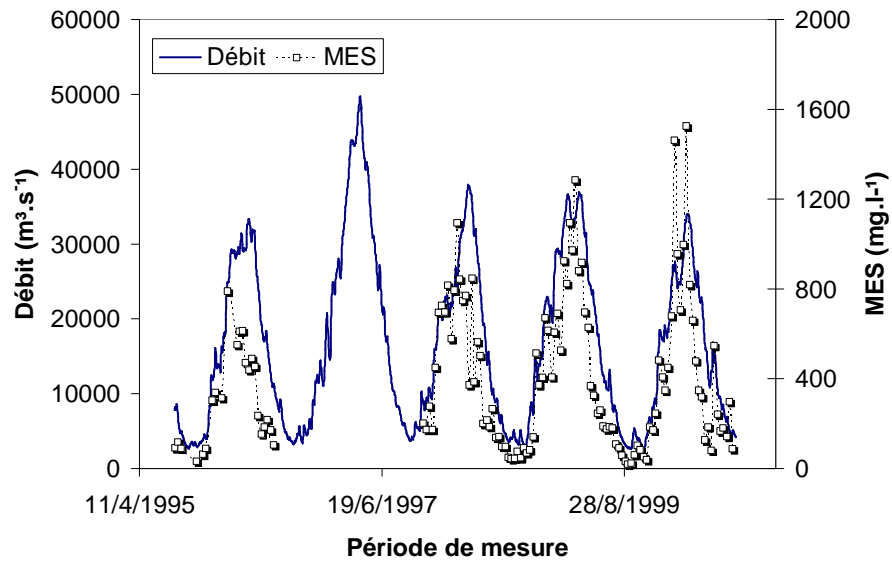
Rio	Superfície (km²)	Descarga Média (m³.s⁻¹)
1. Amazonas em Óbidos	4 618 750	170 070
2. Negro em Serrinha	279 950	16 070
3. Solimões em Manacapuru	2 147 740	102 470
4. Solimões em Tabatinga	880 320	42 800
5. Madeira em Borba	1 324 700	27 940
6. Madeira em Porto Velho	954 290	18 600
7. Branco em Caracarai	124 980	2 880
8. Purús em Lábrea	220 350	5 530
9. Tapajós em Itaituba	451 600	16 500



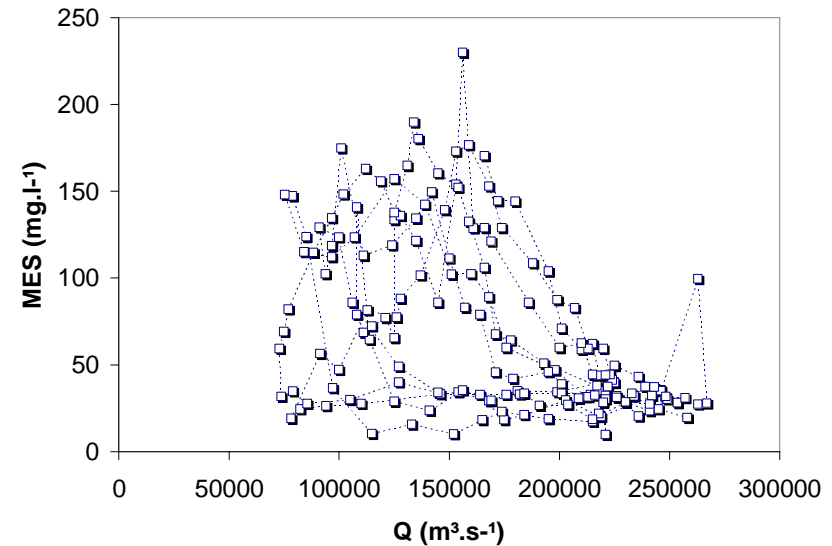
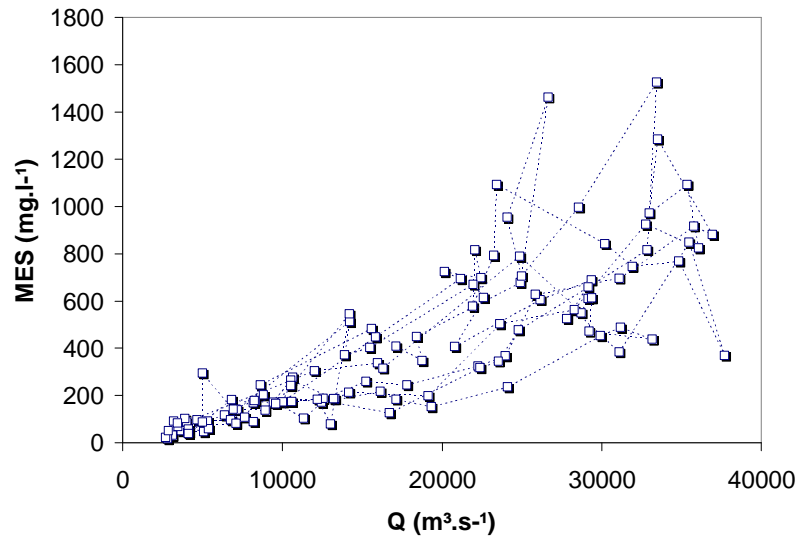
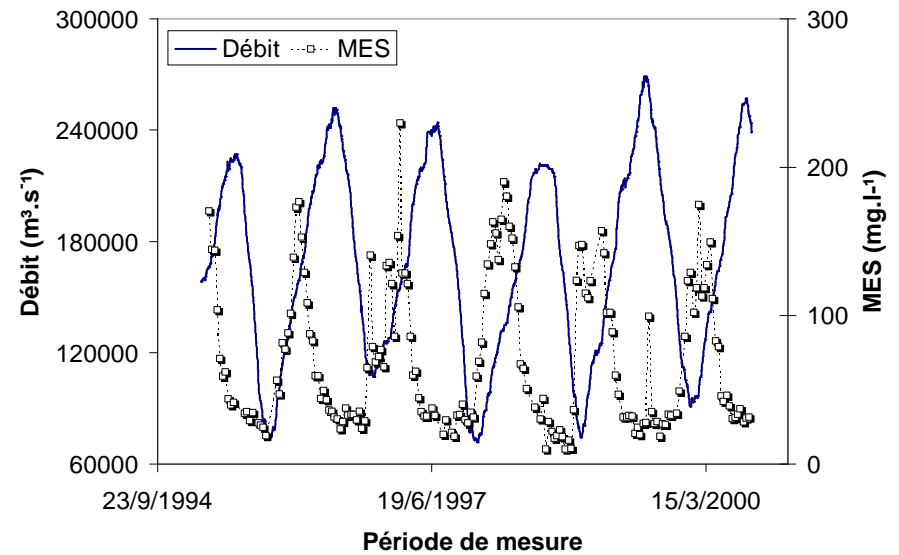
Fonte: Filizola (2003)

Variabilidade temporal de [MES]=f(Q)

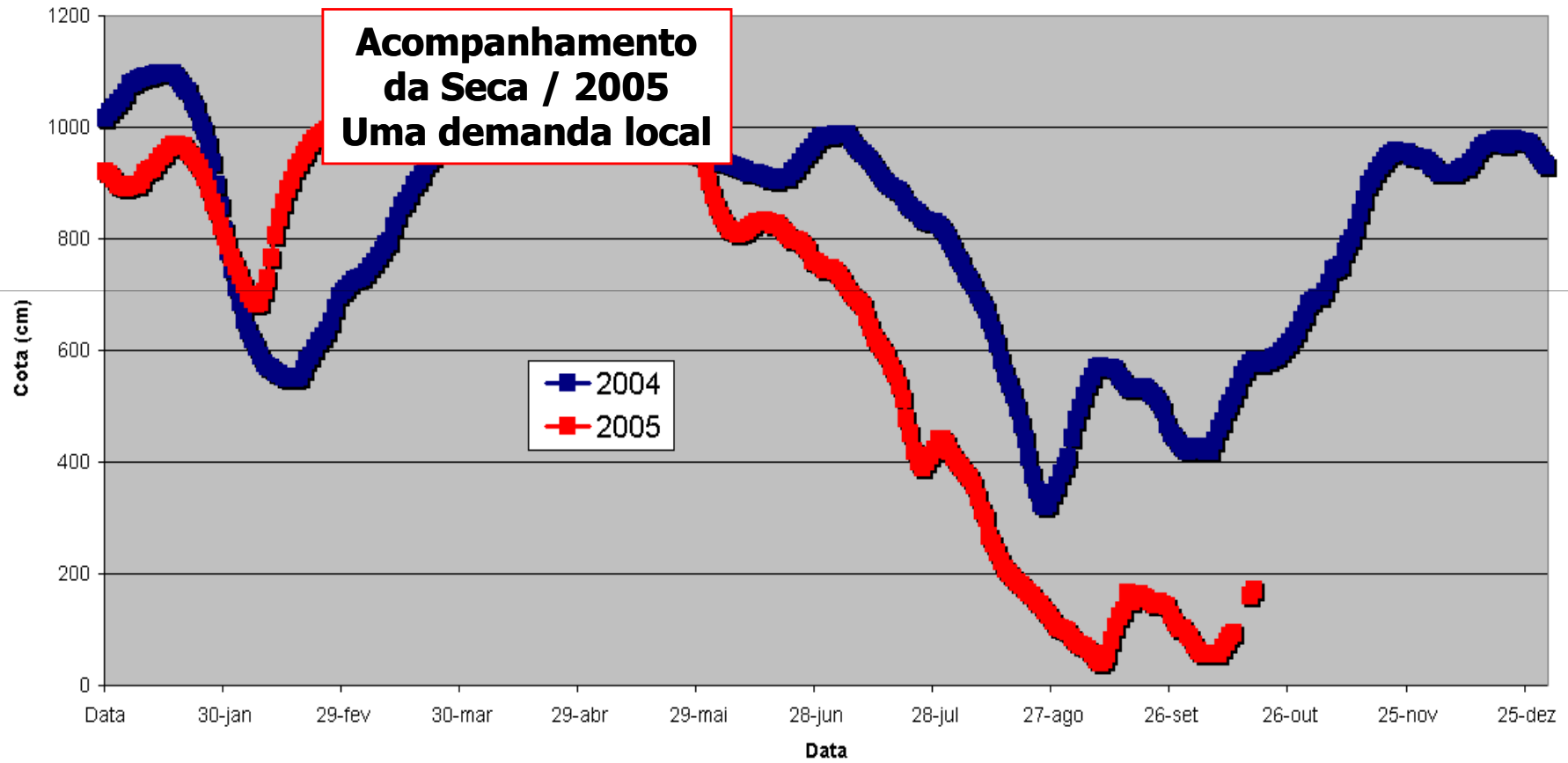
Rio Madeira à Porto Velho



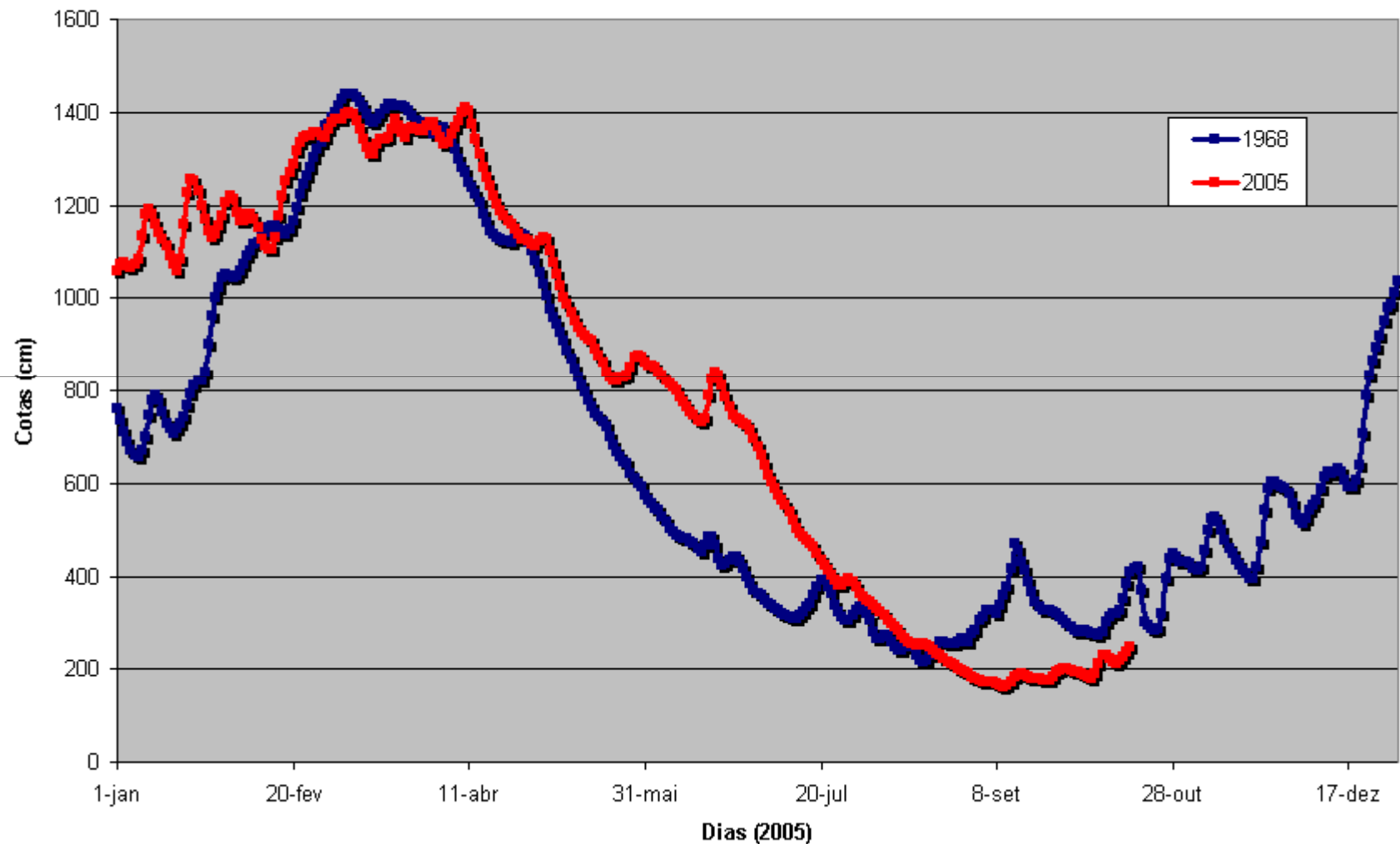
Rio Amazonas à Óbidos



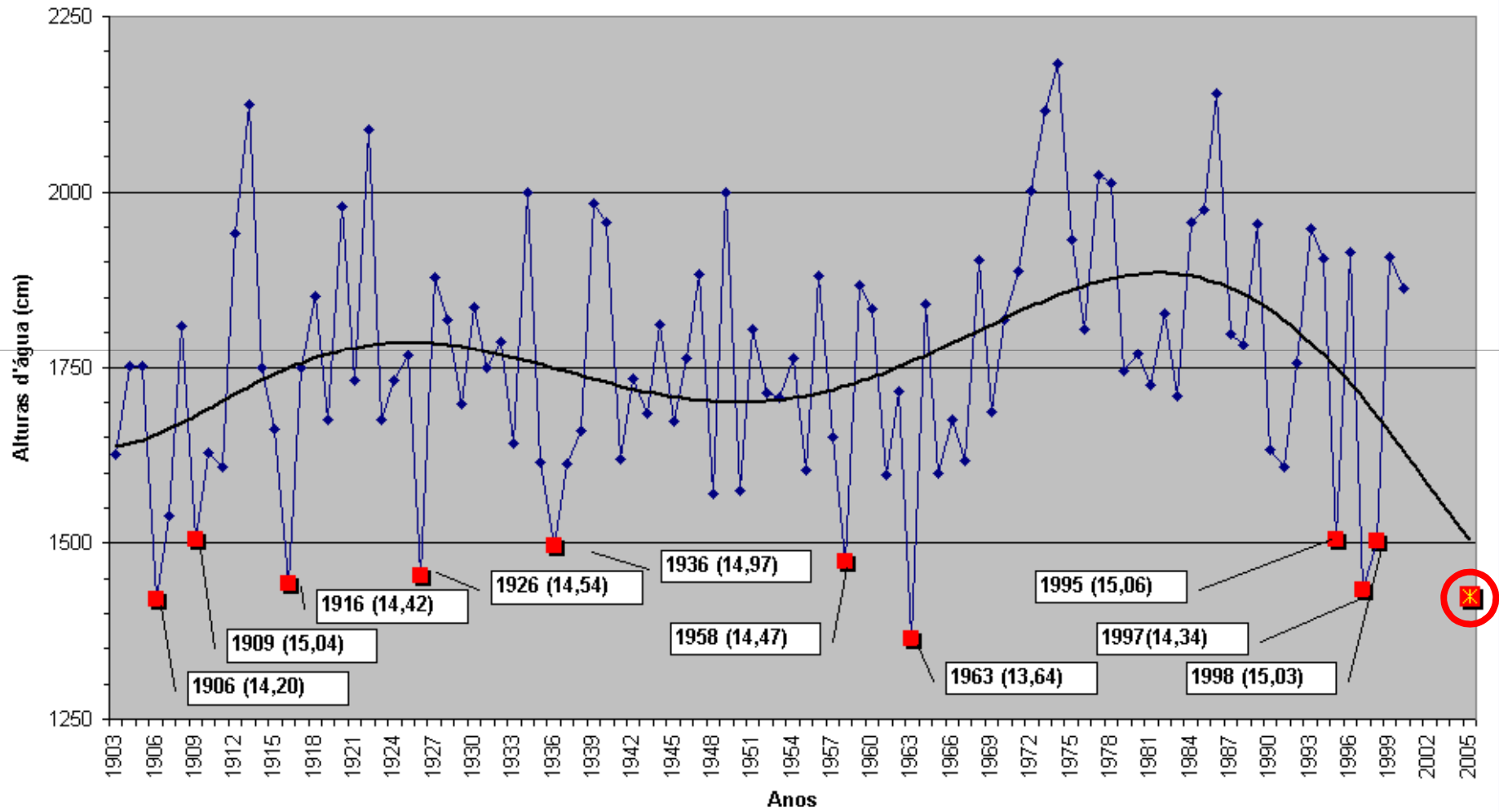
Rio Solimões em Tabatinga



Porto Velho - 15400000 - Rio Madeira Anos mais secos



Cotas Míminas do Rio Negro em Manaus





Margem do Rio Negro em frente Manaus

21/10/2005, nível 14,41 metros

Gracias !

