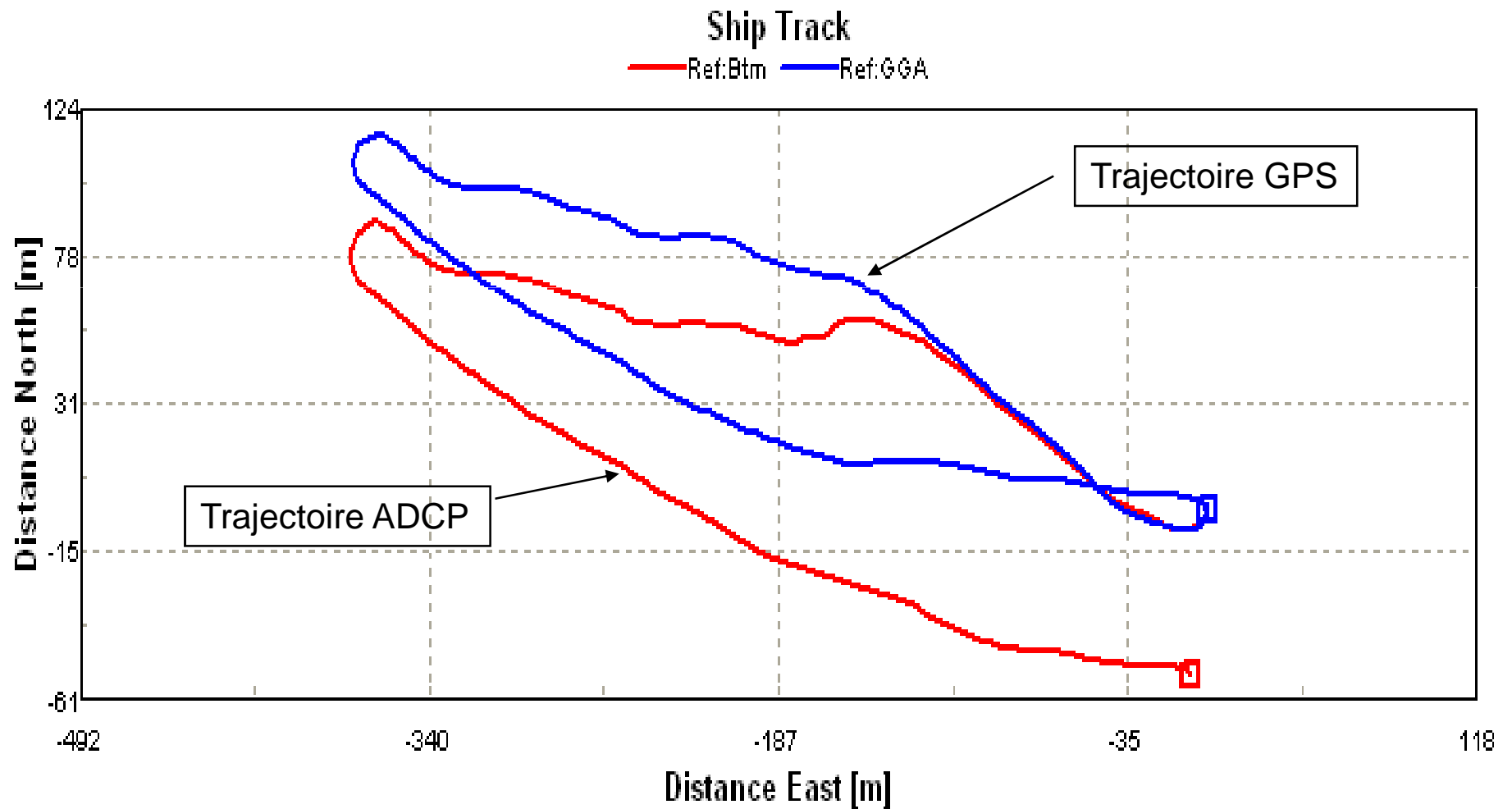
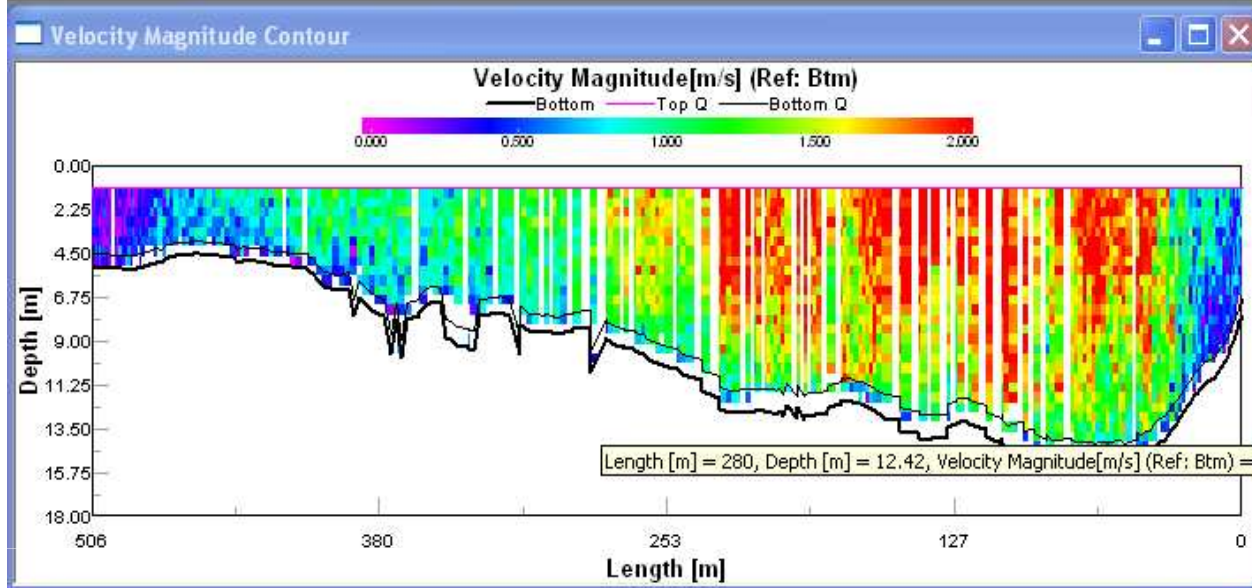


IMPACT DES FONDS MOBILES SUR LES MESURES DE DEBITS PAR ADCP



DETECTION DES FONDS MOBILES PAR COUPLAGE DE L'ADCP A UN GPS





Composite Tabular

Ens. #	288	# Ens.	279
Lost Ens.	0	Bad Ens.	57
%Bad Bins	1%	Delta Time	1.01
16-Oct-05		17:40:57.30	
Pitch	Roll	Heading	Temp
-0°	8°	227°	28°C

Discharge (Btm) Right to Left

Good Bins	6	
Top Q	773.592	[m³/s]
Measured Q	5083.254	[m³/s]
Bottom Q	564.280	[m³/s]
Left Q	2.363	[m³/s]
Right Q	14.439	[m³/s]
Total Q	6437.927	[m³/s]

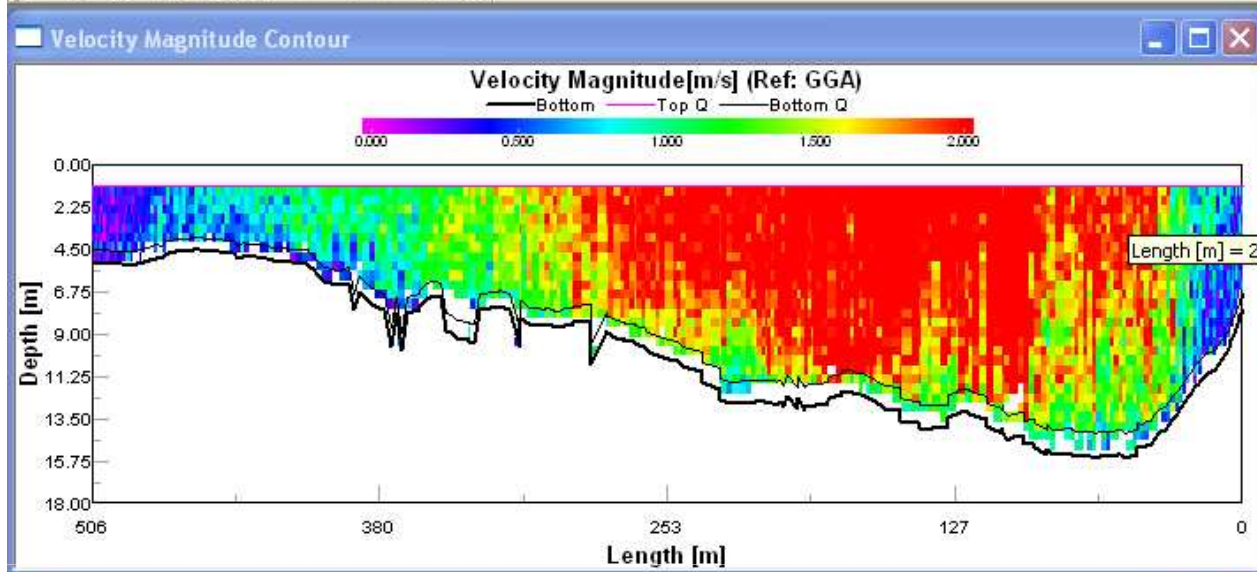
Navigation (Btm)

Boat Speed	0.979	[m/s]
Boat Course	238.92	[°]
Water Speed	0.201	[m/s]
Water Dir.	63.62	[°]
Calc. Depth	5.12	[m]
Length	506.46	[m]
Distance MG	491.15	[m]
Course MG	266.05	[°]
Time	279.12	[s]

GPS Position

Latitude	-5° 4.565600'
Longitude	-75° 33.332200'





Composite Tabular

Ens. #	288	# Ens.	279
Lost Ens.	0	Bad Ens.	1
%Bad Bins	1%	Delta Time	1.01
16-Oct-05		17:40:57.30	
Pitch	Roll	Heading	Temp

Length [m] = 2, Depth [m] = 1.92, Velocity Magnitude[m/s] (Ref: GGA) = 0.287

Discharge (GGA) Right to Left

Good Bins	6
Top Q	929.709 [m ³ /s]
Measured Q	6118.628 [m ³ /s]
Bottom Q	678.708 [m ³ /s]
Left Q	2.439 [m ³ /s]
Right Q	11.417 [m ³ /s]
Total Q	7740.901 [m³/s]



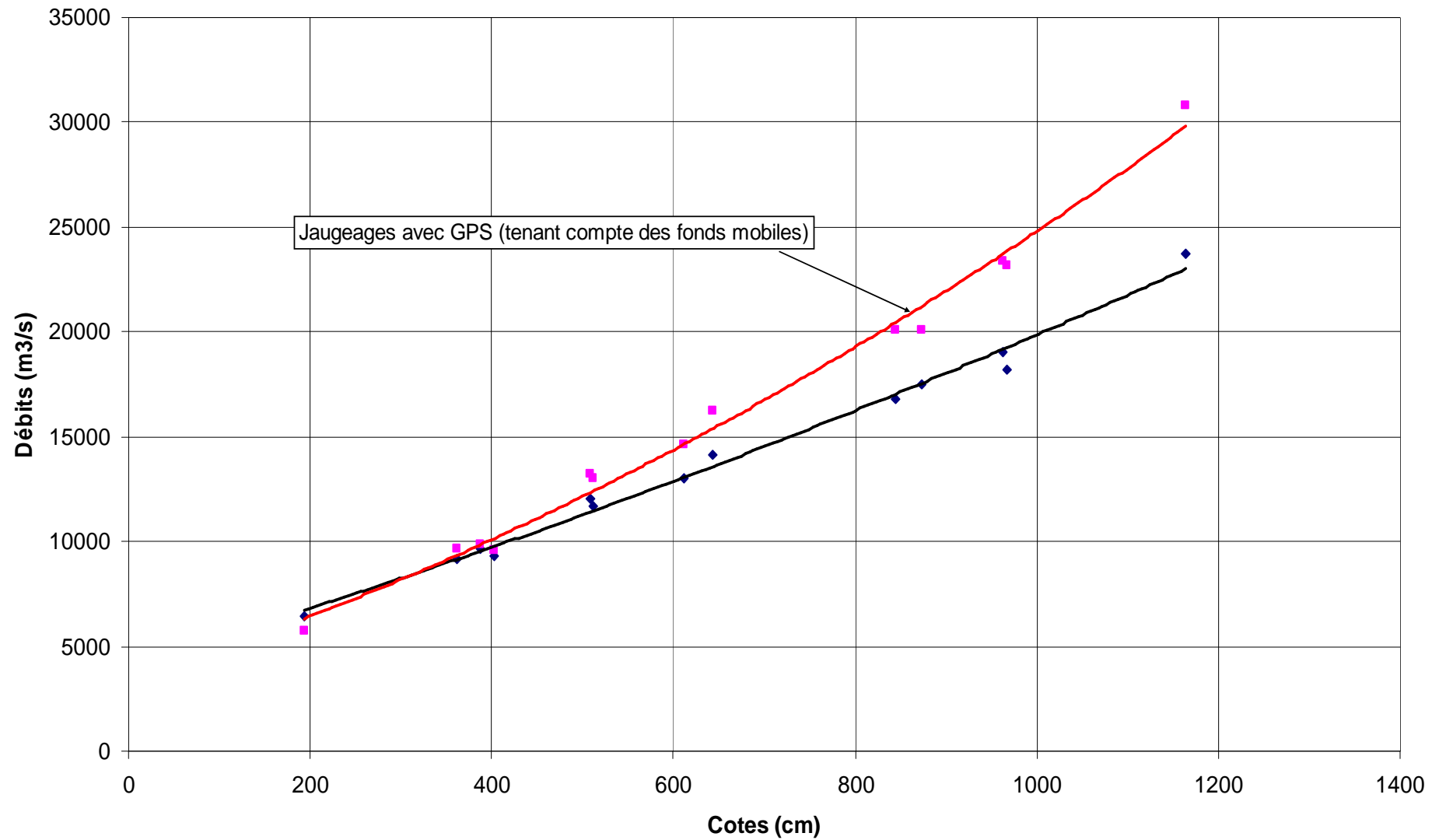
Navigation (GGA)

Boat Speed	1.077 [m/s]
Boat Course	239.11 [°]
Water Speed	0.104 [m/s]
Water Dir.	66.14 [°]
Calc. Depth	5.12 [m]
Length	509.44 [m]
Distance MG	491.65 [m]
Course MG	273.37 [°]
Time	279.12 [s]

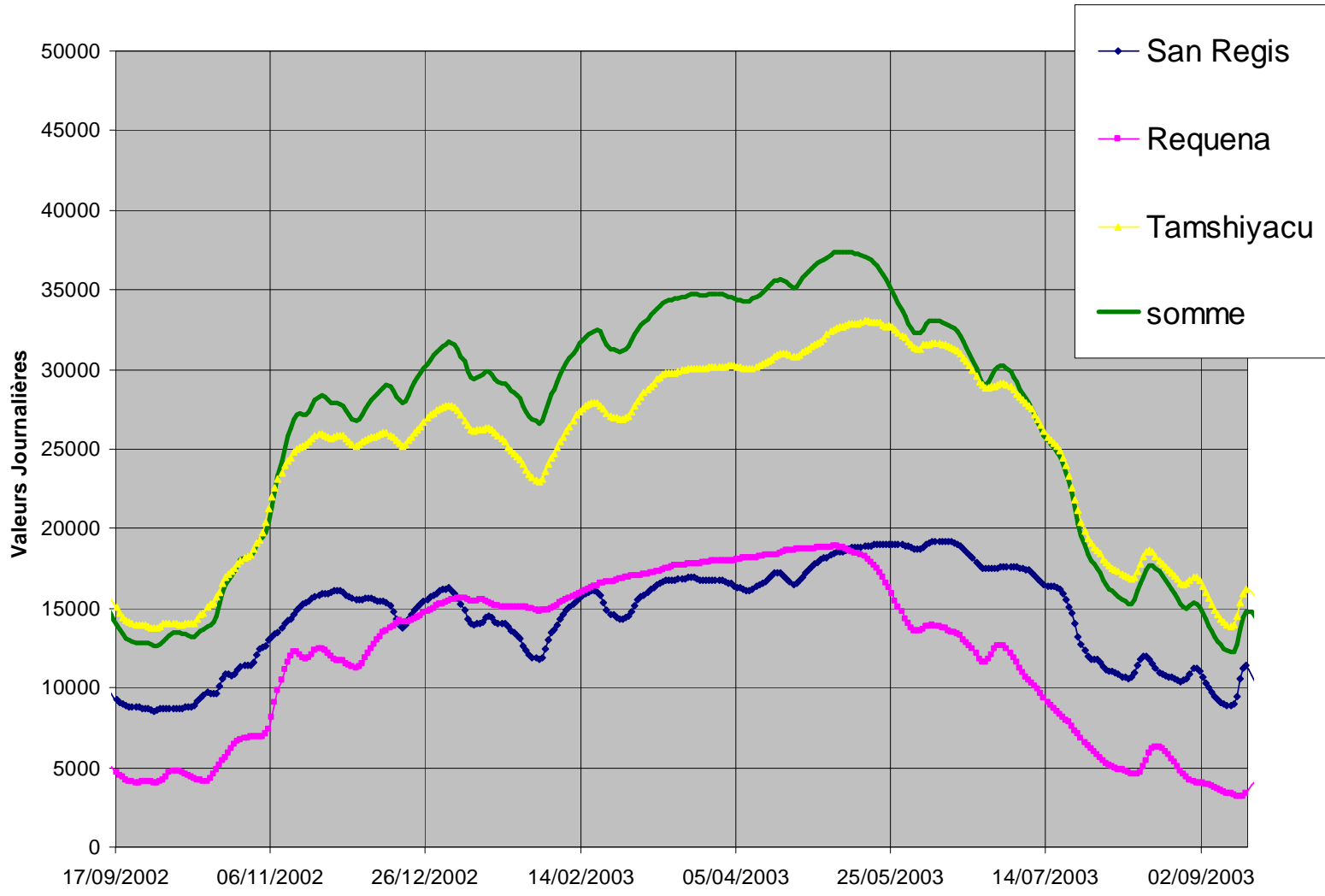
GPS Position

Latitude	-5° 4.565600'
Longitude	-75° 33.332200'

Jaugeages de la Station : 10070500 = San Regis (Amazonas)
Capteur : I-1 = Données Opérationnelles



Valeurs Journalières



Valeurs Journalières apres correction due aux fonds mobiles

