



Environment and Health



Integrative Approach

Emmanuel ROUX



Colloque HYBAM, Manaus
19-21/11/2007

Plan



Plan

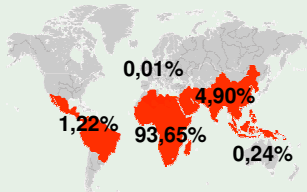




Public health

1.5 to 2.7 M of deaths / year

Third cause of mortality of
children under 5 years old

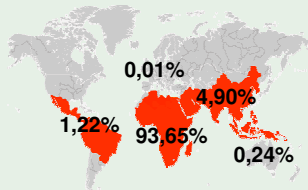


[Sipe & Dale 2003, OMS 2003]



Public health

1.5 to 2.7 M of deaths / year
Third cause of mortality of
children under 5 years old



[Sipe & Dale 2003, OMS 2003]



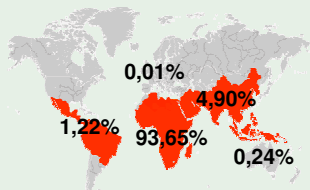
[Ministério da Saúde 2006]

Societal Issues



Public health

1.5 to 2.7 M of deaths / year
Third cause of mortality of
children under 5 years old



[Sipe & Dale 2003, OMS 2003]



[Ministério da Saúde 2006]

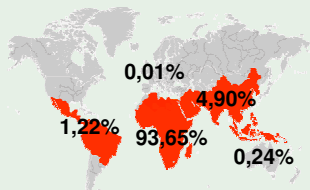


[DSDS, Cire Antilles-Guyane, InVS 2006]



Public health

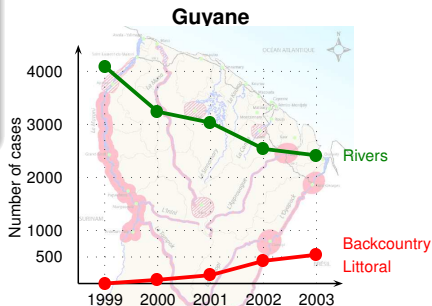
1.5 to 2.7 M of deaths / year
Third cause of mortality of children under 5 years old



[Sipe & Dale 2003, OMS 2003]



[Ministério da Saúde 2006]



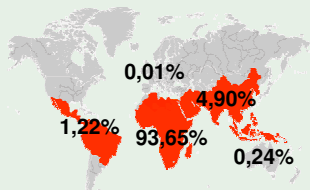
[DSDS, Cire Antilles-Guyane, InVS 2006]

Societal Issues



Public health

1.5 to 2.7 M of deaths / year
Third cause of mortality of
children under 5 years old



[Sipe & Dale 2003, OMS 2003]

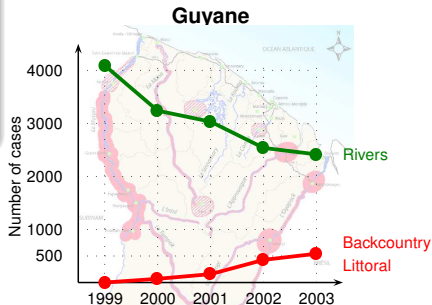


[Ministério da Saúde 2006]

Development

- 70% of the GDP / inhabitant
- Development slowed down by 1.3% / year

[Noel 2003]



[DSDS, Cire Antilles-Guyane, InVS 2006]



Objectives

1 Describing **interactions between**

- **environmental,**
- **biological,**
- **socio-medical,**
- **socio-demographic factors**

that control the **emergence** and the **dynamics of the epidemics**



Objectives

1 Describing **interactions between**

- **environmental,**
- **biological,**
- **socio-medical,**
- **socio-demographic factors**

that control the **emergence** and the **dynamics of the epidemics**

2 Intregrating the **spatial and temporal dimensions** of the environmental parameters into the epidemiological studies of malaria



Objectives

1 Describing **interactions between**

- **environmental,**
- **biological,**
- **socio-medical,**
- **socio-demographic factors**

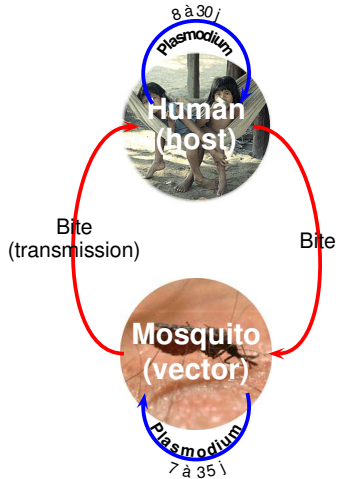
that control the **emergence** and the **dynamics of the epidemics**

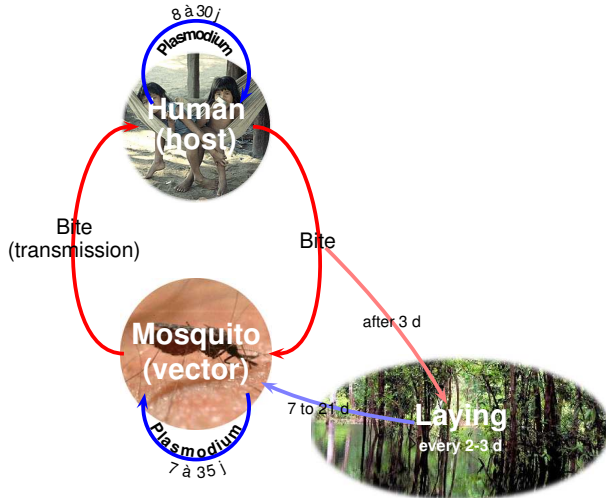
2 Intregrating the **spatial and temporal dimensions** of the environmental parameters into the epidemiological studies of malaria

Stakes

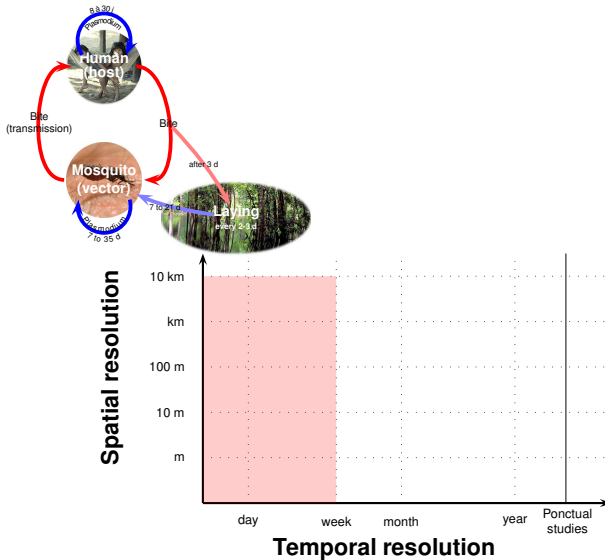
Better understanding the emergence and transmission modes

→ Decision support (public health, land settlement)

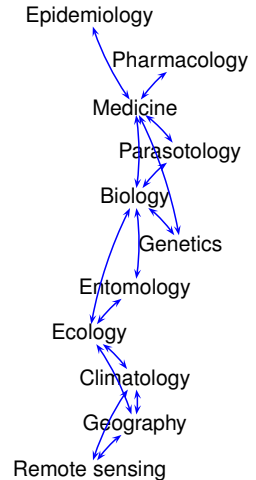
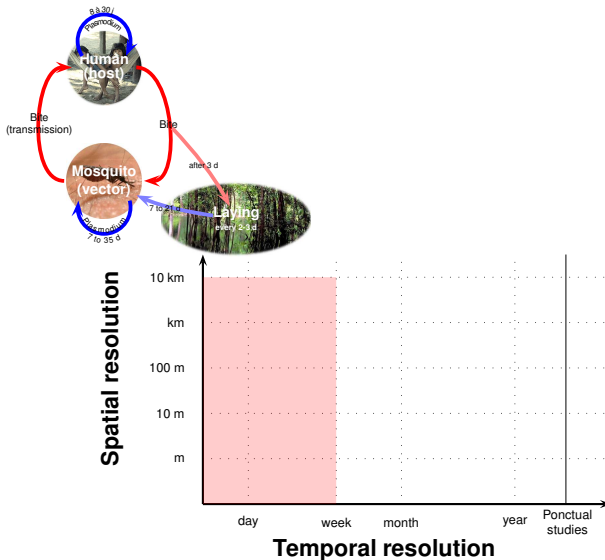




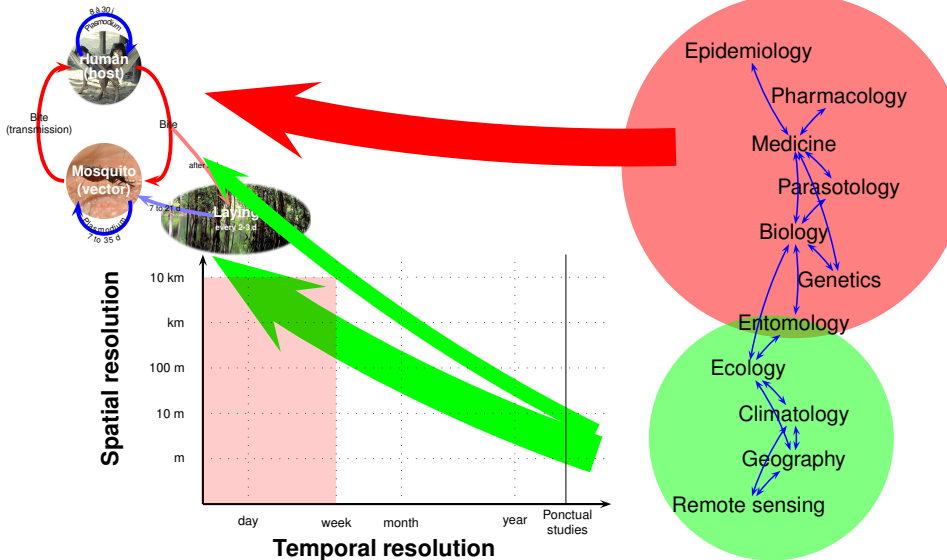
Scientific Issues



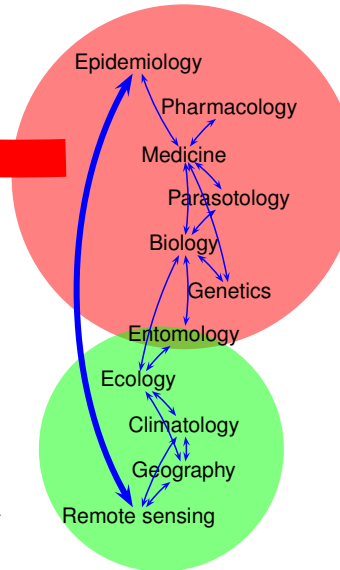
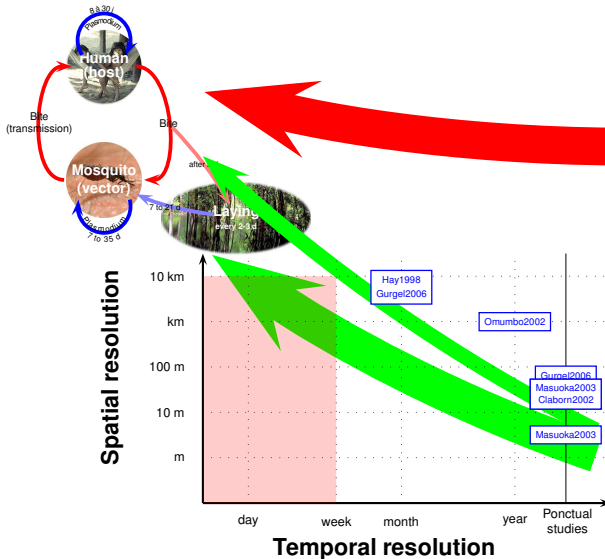
Scientific Issues



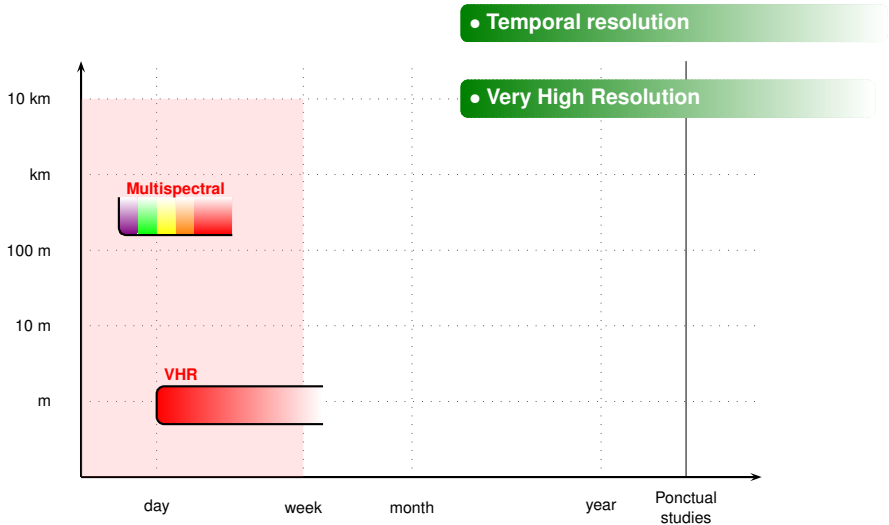
Scientific Issues



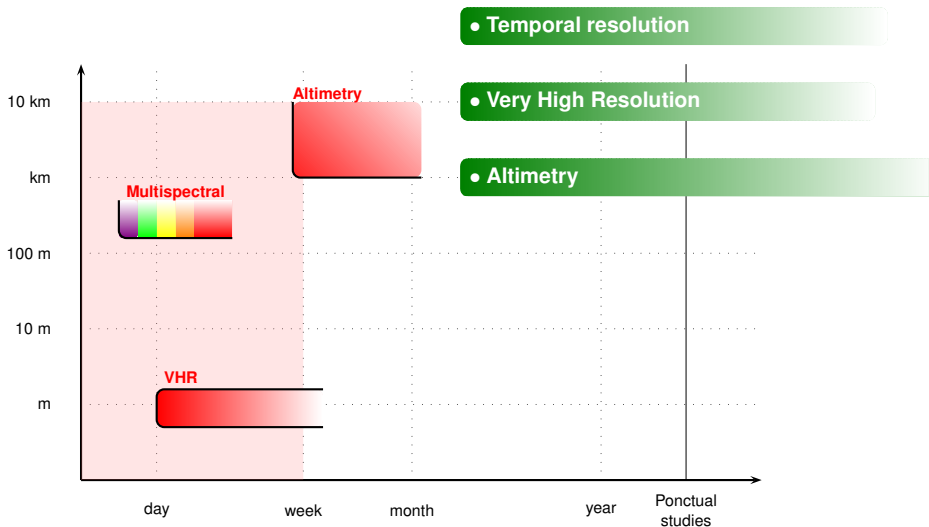
Scientific Issues



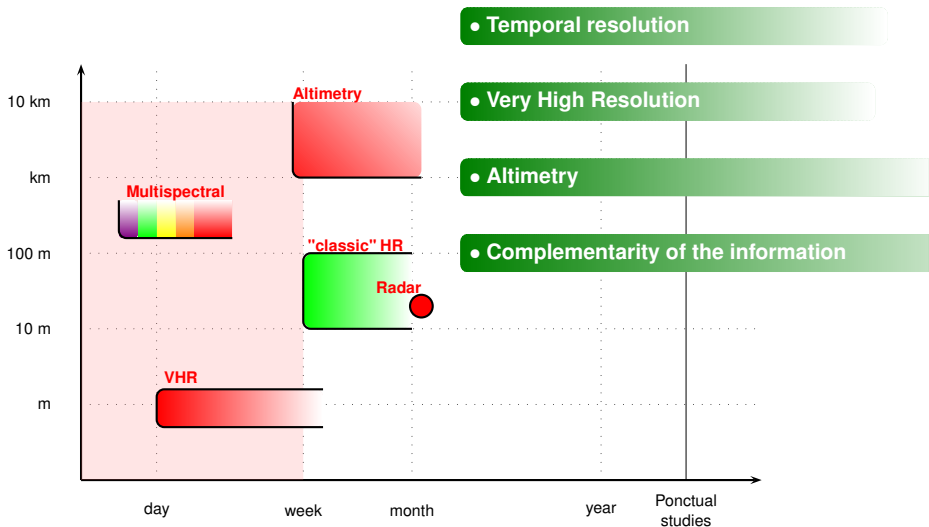
Remote Sensing



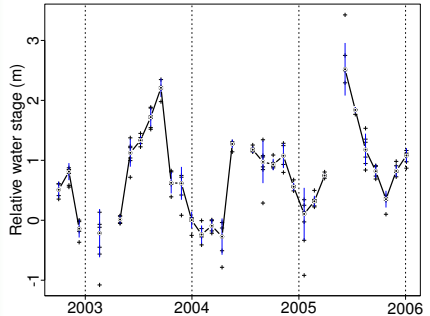
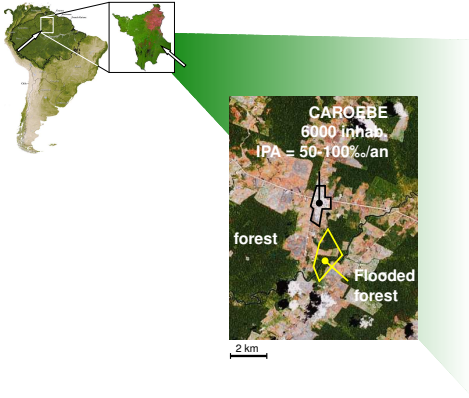
Remote Sensing



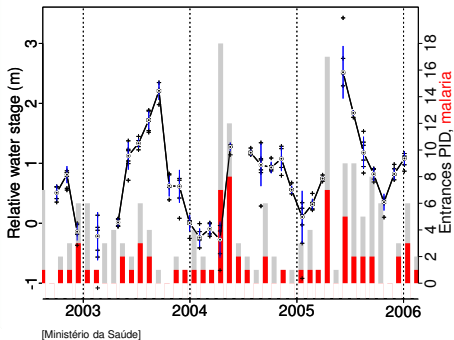
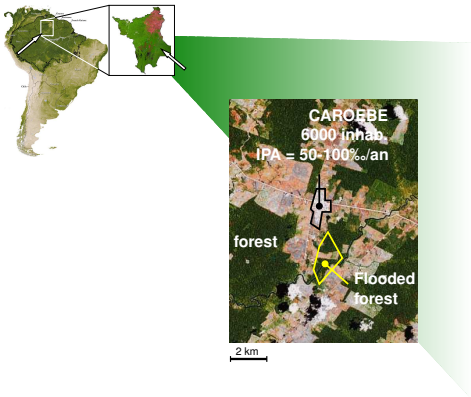
Remote Sensing



Satellite Radar Altimetry and Malaria



Satellite Radar Altimetry and Malaria



Integrative Approach - Data



Satellite based



In Situ



Epidemiological



Entomological



Sociologic



Public Policies related

Integrative Approach - Data



Satellite based

Vegetation index, water quality, altimetry, relief



In Situ

Pluviometry, quality, discharges



Epidemiological

Incidence, population features



Entomological

Species, density, vectors' aggressiveness



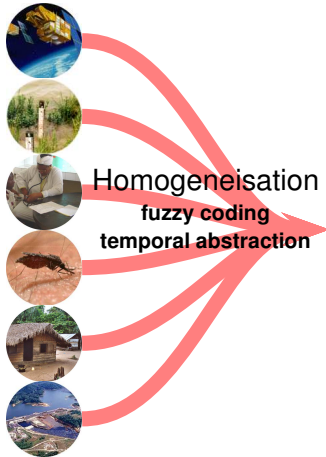
Sociologic

Social practices



Public Policies related

Public health, land settlement



- **Multiple Correspondence Analysis**
- **Machine Learning**
- **Data Mining**

*... Taking into account
time and space ...*

Plan





Environnement et (RE)émergence de Maladies Infectieuses en Bassin Amazonien

Environment and (RE)emergence of Infectious Diseases in the Amazonian Basin

Jean-Marie FOTSING (IRD-ESPACE)

Objectives

Identifying environmental, demographical, genetic factors that explain the emergence and transmission of the infectious diseases in humid tropical environment



Environnement et (RE)émergence de Maladies Infectieuses en Bassin Amazonien

Environment and (RE)emergence of Infectious Diseases in the Amazonian Basin

Jean-Marie FOTSING (IRD-ESPACE)

Objectives

Identifying environmental, demographical, genetic factors that explain the emergence and transmission of the infectious diseases in humid tropical environment

Diseases

Malaria, Dengue, Buruli ulcer disease (*Mycobacterium ulcerans* infection)



Environnement et (RE)émergence de Maladies Infectieuses en Bassin Amazonien

Environment and (RE)emergence of Infectious Diseases in the Amazonian Basin

Jean-Marie FOTSING (IRD-ESPACE)

Objectives

Identifying environmental, demographical, genetic factors that explain the emergence and transmission of the infectious diseases in humid tropical environment

Diseases

Malaria, Dengue, Buruli ulcer disease (*Mycobacterium ulcerans* infection)

Methods

- Remote sensing (SEAS Guyane → SPOT 2,4,5, and ENVISAT)
- Experimental ponds (artificial breeding places)
- Epidemiological and entomological data
- Vectors and pathogenic agents genetics



Marc LUCOTTE (*Institute of Environmental Sciences, Québec University, Montréal*)

2 health issues

- Hg
- Chagas disease



Marc LUCOTTE (*Institute of Environmental Sciences, Québec University, Montréal*)

2 health issues

- Hg
- Chagas disease

Objectives

- Hg and Chagas disease : similarities, synergies and antagonisms
- Describing links between landscape, social practices, housing, diet, land use and health



Marc LUCOTTE (*Institute of Environmental Sciences, Québec University, Montréal*)

2 health issues

- Hg
- Chagas disease

Objectives

- Hg and Chagas disease : similarities, synergies and antagonisms
- Describing links between landscape, social practices, housing, diet, land use and health

Methods

- 3 pilot communities
 - Riparian, relatively old
 - Recent near a road
 - Native
- Experimental parcels (pilot planting)
- Social networks



"Environment and Health" Group

Chemists, geo-chemists, geologists,
mineralogists, ecologist
pharmacologist (UR152), remote sensing

→ **Transverse research axis**

<http://www.lmtg.obs-mip.fr/user/sante>



New Team Associated with IRD (PHIESAM)

"Saude e Meio Ambiente" (Dr Wanderli Pedro Tadei)



"Environment and Health" Group

Chemists, geo-chemists, geologists,
mineralogists, ecologist
pharmacologist (UR152), remote sensing

→ **Transverse research axis**

<http://www.lmtg.obs-mip.fr/user/sante>



New Team Associated with IRD (PHIESAM)

"Saude e Meio Ambiente" (Dr Wanderli Pedro Tadei)

IRD S140 ESPACE

Projects Environment/Remote sensing
and health (EREMIBA, PLUPH, ...)

"Environment and Health" Group

Chemists, geo-chemists, geologists,
mineralogists, ecologist
pharmacologist (UR152), remote sensing

→ **Transverse research axis**

<http://www.lmtg.obs-mip.fr/user/sante>



- **(Re)emergent infectious diseases** constitute a major public health issue (malaria, dengue, Chagas disease, buruli ulcer, ...)
 - Understanding, monitoring, predicting and generating alerts



- **(Re)emergent infectious diseases** constitute a major public health issue (malaria, dengue, Chagas disease, buruli ulcer, ...)
 - Understanding, monitoring, predicting and generating alerts
- **Environmental factors** are playing a key role



- **(Re)emergent infectious diseases** constitute a major public health issue (malaria, dengue, Chagas disease, buruli ulcer, ...)
 - Understanding, monitoring, predicting and generating alerts
- **Environmental factors** are playing a key role
- **Remote sensing** can help characterizing environment in space and time
 - New sensors **High spatial and temporal resolutions**
 - **Altimetry** ...



- **(Re)emergent infectious diseases** constitute a major public health issue (malaria, dengue, Chagas disease, buruli ulcer, ...)
 - Understanding, monitoring, predicting and generating alerts
- **Environmental factors** are playing a key role
- **Remote sensing** can help characterizing environment in space and time
 - New sensors **High spatial and temporal resolutions**
 - **Altimetry** ...
- **Remote sensing alone is not sufficient**
 - Entomological, socio-medical, socio-demographical, ... data/knowledge



- **(Re)emergent infectious diseases** constitute a major public health issue (malaria, dengue, Chagas disease, buruli ulcer, ...)
 - Understanding, monitoring, predicting and generating alerts
- **Environmental factors** are playing a key role
- **Remote sensing** can help characterizing environment in space and time
 - New sensors **High spatial and temporal resolutions**
 - **Altimetry** ...
- **Remote sensing alone is not sufficient**
 - Entomological, socio-medical, socio-demographical, ... data/knowledge
- Methods to **jointly analyse temporal, spatialized, heterogeneous data** have to be applied, adapted, developed



- **(Re)emergent infectious diseases** constitute a major public health issue (malaria, dengue, Chagas disease, buruli ulcer, ...)
 - Understanding, monitoring, predicting and generating alerts
- **Environmental factors** are playing a key role
- **Remote sensing** can help characterizing environment in space and time
 - New sensors **High spatial and temporal resolutions**
 - **Altimetry** ...
- **Remote sensing alone is not sufficient**
 - Entomological, socio-medical, socio-demographical, ... data/knowledge
- Methods to **jointly analyse temporal, spatialized, heterogeneous data** have to be applied, adapted, developed
- **Transdisciplinary projects, research groups and networks** are emerging